

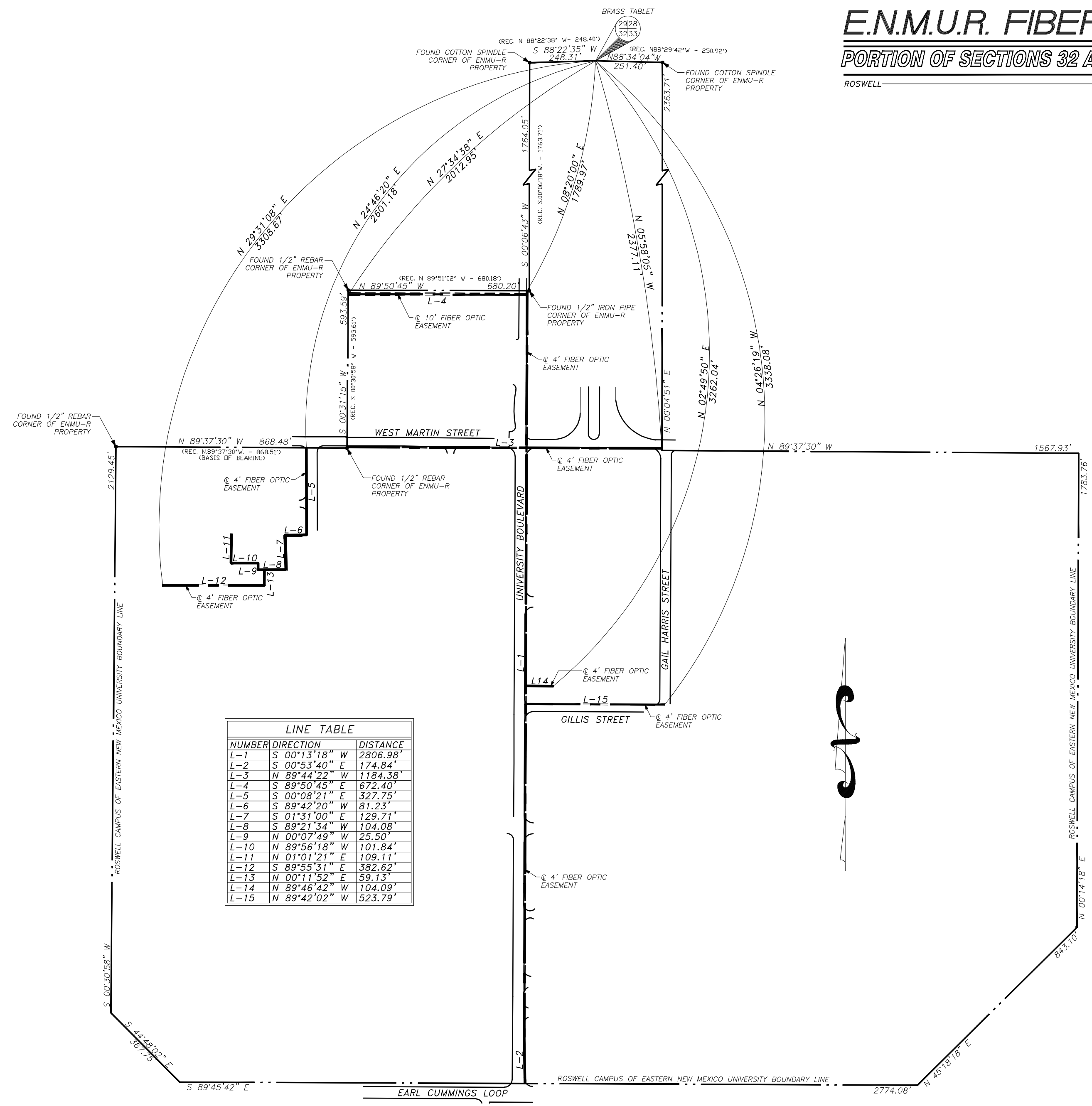
E.N.M.U.R. FIBER OPTIC LINE EASEMENT SURVEY

PORTION OF SECTIONS 32 AND 33 IN TOWNSHIP 11 SOUTH OF RANGE 24 EAST, N.M.P.M.

ROSWELL

CHAVES COUNTY

NEW MEXICO



NUMBER	DIRECTION	DISTANCE
L-1	S 00°13'18" W	2806.98'
L-2	S 00°53'40" E	174.84'
L-3	N 89°44'22" W	1184.38'
L-4	S 89°50'45" E	672.40'
L-5	S 00°08'21" E	327.75'
L-6	S 89°42'20" W	81.23'
L-7	S 01°31'00" E	129.71'
L-8	S 89°21'34" W	104.08'
L-9	N 00°07'49" W	25.50'
L-10	N 89°56'18" W	101.84'
L-11	N 01°01'21" E	109.11'
L-12	S 89°55'31" E	382.62'
L-13	N 00°11'52" E	59.13'
L-14	N 89°46'42" W	104.09'
L-15	N 89°42'02" W	523.79'

LEGAL DESCRIPTION:

CERTAIN STRIPS OF LAND BEING SITUATED WITHIN SECTIONS 32 AND 33 IN TOWNSHIP 11 SOUTH OF RANGE 24 EAST OF THE NEW MEXICO PRINCIPAL MERIDIAN, IN THE CITY OF ROSWELL, COUNTY OF CHAVES AND THE STATE OF NEW MEXICO AND ALSO BEING LOCATED WITHIN THE BOUNDARY OF THE ROSWELL CAMPUS OF EASTERN NEW MEXICO UNIVERSITY AS DESCRIBED IN THE CORRECTION DEED FILED IN THE CHAVES COUNTY CLERK'S OFFICE ON JANUARY 06, 1969 AND RECORDED IN BOOK 252 OF DEED RECORDS, AT PAGE 100 FROM WHICH THE SECTION CORNER COMMON TO SECTIONS 28, 29, 32 AND 33, T. 11 SOUTH, RANGE 24 E., N.M.P.M. BEARS N.08°20'00"E. A DISTANCE OF 1789.97 FEET; THENCE, FROM SAID POINT OF BEGINNING, S.00°13'18"W. A DISTANCE OF 2806.98 FEET; THENCE S.00°53'40"E. A DISTANCE OF 174.84 FEET TO A POINT ON THE SOUTH LINE OF THE ROSWELL CAMPUS OF EASTERN NEW MEXICO UNIVERSITY;

BEGINNING AT A POINT ON THE NORTHERLY LINE OF THE ROSWELL CAMPUS OF EASTERN NEW MEXICO UNIVERSITY AS DESCRIBED IN THE CORRECTION DEED FILED IN THE CHAVES COUNTY CLERK'S OFFICE ON JANUARY 06, 1969 AND RECORDED IN BOOK 252 OF DEED RECORDS, AT PAGE 100 FROM WHICH THE SECTION CORNER COMMON TO SECTIONS 28, 29, 32 AND 33, T. 11 SOUTH, RANGE 24 E., N.M.P.M. BEARS N.08°20'00"E. A DISTANCE OF 1789.97 FEET; THENCE, FROM SAID POINT OF BEGINNING, S.00°13'18"W. A DISTANCE OF 2806.98 FEET; THENCE S.00°53'40"E. A DISTANCE OF 174.84 FEET TO A POINT ON THE SOUTH LINE OF THE ROSWELL CAMPUS OF EASTERN NEW MEXICO UNIVERSITY;

AND

BEGINNING AT A POINT ON THE EASTERLY LINE OF THE ROSWELL CAMPUS OF EASTERN NEW MEXICO UNIVERSITY AS DESCRIBED IN THE CORRECTION DEED FILED IN THE CHAVES COUNTY CLERK'S OFFICE ON JANUARY 06, 1969 AND RECORDED IN BOOK 252 OF DEED RECORDS, AT PAGE 100 FROM WHICH THE SECTION CORNER COMMON TO SECTIONS 28, 29, 32 AND 33, T. 11 SOUTH, RANGE 24 E., N.M.P.M. BEARS N.05°58'05"W. A DISTANCE OF 2377.11 FEET; THENCE, FROM SAID POINT OF BEGINNING, N.89°44'22"W. A DISTANCE OF 1184.38 FEET TO A POINT ON THE WESTERLY LINE OF SAID ROSWELL CAMPUS OF EASTERN NEW MEXICO UNIVERSITY;

AND

BEGINNING AT A POINT FROM WHICH THE SECTION CORNER COMMON TO SECTIONS 28, 29, 32 AND 33, T. 11 SOUTH, RANGE 24 E., N.M.P.M. BEARS N.02°49'50"E. A DISTANCE OF 3262.04 FEET; THENCE, FROM SAID POINT OF BEGINNING, N.89°46'42"W. A DISTANCE OF 104.09 FEET;

AND

BEGINNING AT A POINT FROM WHICH THE SECTION CORNER COMMON TO SECTIONS 28, 29, 32 AND 33, T. 11 SOUTH, RANGE 24 E., N.M.P.M. BEARS N.04°26'19"W. A DISTANCE OF 3338.08 FEET; THENCE, FROM SAID POINT OF BEGINNING, N.89°42'02"W. A DISTANCE OF 523.79 FEET;

AND

BEGINNING AT A POINT FROM WHICH THE SECTION CORNER COMMON TO SECTIONS 28, 29, 32 AND 33, T. 11 SOUTH, RANGE 24 E., N.M.P.M. BEARS N.29°31'08"E. A DISTANCE OF 3308.67 FEET; THENCE, FROM SAID POINT OF BEGINNING, S.89°55'31"E. A DISTANCE OF 382.62 FEET; THENCE N.00°11'52"E. A DISTANCE OF 59.13 FEET;

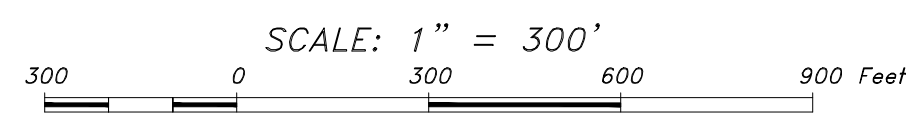
AND

BEGINNING AT A POINT ON THE NORTHERLY LINE OF THE ROSWELL CAMPUS OF EASTERN NEW MEXICO UNIVERSITY AS DESCRIBED IN THE CORRECTION DEED FILED IN THE CHAVES COUNTY CLERK'S OFFICE ON JANUARY 06, 1969 AND RECORDED IN BOOK 252 OF DEED RECORDS, AT PAGE 100 FROM WHICH THE SECTION CORNER COMMON TO SECTIONS 28, 29, 32 AND 33, T. 11 SOUTH, RANGE 24 E., N.M.P.M. BEARS N.24°46'20"E. A DISTANCE OF 2601.18 FEET; THENCE, FROM SAID POINT OF BEGINNING, S.00°08'21"E. A DISTANCE OF 327.75 FEET; THENCE THENCE S.89°42'20"W. A DISTANCE OF 81.23 FEET; THENCE S.01°31'00"E. A DISTANCE OF 129.71 FEET; THENCE S.89°21'34"W. A DISTANCE OF 104.08 FEET; THENCE N.00°07'49"W. A DISTANCE OF 25.50 FEET; THENCE N.89°56'18"W. A DISTANCE OF 101.84 FEET; THENCE N.01°01'21"E. A DISTANCE OF 109.11 FEET;

AND ALSO

A 10 FOOT WIDE STRIP OF LAND BEING 5 FEET EACH SIDE OF THE FOLLOWING DESCRIBED CENTERLINE:
 BEGINNING AT A POINT FROM WHICH THE SECTION CORNER COMMON TO SECTIONS 28, 29, 32 AND 33, T. 11 SOUTH, RANGE 24 E., N.M.P.M. BEARS N.27°34'38"E. A DISTANCE OF 2012.95 FEET; THENCE, FROM SAID POINT OF BEGINNING, S.89°50'45"E. ALONG A LINE BEING 15 FEET SOUTH AND PARALLEL TO THE NORTHERLY LINE OF THE ROSWELL CAMPUS OF EASTERN NEW MEXICO UNIVERSITY AS DESCRIBED IN THE CORRECTION DEED FILED IN THE CHAVES COUNTY CLERK'S OFFICE ON JANUARY 06, 1969 AND RECORDED IN BOOK 252 OF DEED RECORDS, AT PAGE 100 A DISTANCE OF 672.40 FEET TO A POINT ON THE WESTERLY LINE OF SAID ROSWELL CAMPUS OF EASTERN NEW MEXICO UNIVERSITY.

RAINS SURVEYING COMPANY
 PROFESSIONAL LAND SURVEYING SERVICES • EST. 1996
 P.O. BOX 1474 • ROSWELL • NEW MEXICO • (575)622-8411



SURVEYOR'S CERTIFICATION
 I, TERRY D. RAINS, JR., NEW MEXICO PROFESSIONAL SURVEYOR NUMBER 12516, DO HEREBY CERTIFY THAT THIS EASEMENT SURVEY PLAT AND THE SURVEY ON THE GROUND UPON WHICH IT IS BASED WERE PERFORMED BY ME OR UNDER MY DIRECT SUPERVISION; THAT I AM RESPONSIBLE FOR THIS SURVEY; THAT THIS SURVEY MEETS THE MINIMUM STANDARDS FOR SURVEYING IN NEW MEXICO; AND THAT IT IS TRUE AND CORRECT TO THE BEST OF MY KNOWLEDGE AND BELIEF.

TERRY D. RAINS, JR., P.S.
 N.M.P.S. NUMBER 12516
 RAINS SURVEYING COMPANY, INC.
 P.O. BOX 1474
 ROSWELL, N.M. 88202-1474
 (575) 622-8411



APRIL 27, 2011
 DATE